

cottageLiving®

MARCH 2007

COMFORTSIMPLICITYSTYLE

Light & Airy
Looks You'll Love
All-time Favorite
Cottage Flowers
Irresistible
Makeovers



See more of this
New England
cottage page 82

Pour on the charm!

Tips & ideas for creating cottage style—inside and out

cottageliving.com
AOL Keyword: Cottage Living

\$3.99 US



03>

0 72440 10458 7

GO TO THE SOURCE HOME PLANS

WHAT'S COTTAGE ABOUT IT

- Classic gable front and wing
- Exposed soffits under roof
- Covered porches and rear deck
- Lap siding
- Abundant windows for lots of natural light



CARLTON COTTAGE

WHO DESIGNED IT Architect Rob Carlton of Carlton Architecture in Asheville, North Carolina.

WHY WE LOVE IT The Carlton Cottage defines “multitask.” Rob designed the plan to suit his own growing young family and to include a home office he and his wife both use. “The entryway can be an elegant space to welcome guests, an area of office overflow for big projects, a playroom for coloring, or a racetrack for the kids as they loop through the kitchen and back again,” says Rob. There, an angled wall allows the benefit of two windows, bringing more natural light and better views to the covered rear porch and backyard.

WHERE TO BUILD IT While this plan was designed specifically for Rob’s narrow corner lot, it would work in most tight spaces. With bedrooms on the second floor and open living areas on the main level, this cottage puts every square inch of space to good use. ■

FEATURES

SQUARE FOOTAGE: 3,132*

BEDROOMS: 4*

BATHS: 3½*

FLOORS: 2

CEILING HEIGHTS: 9’ (13’ vaulted in master bedroom)

FOUNDATION: partial basement

* includes basement level (not shown on plan below)

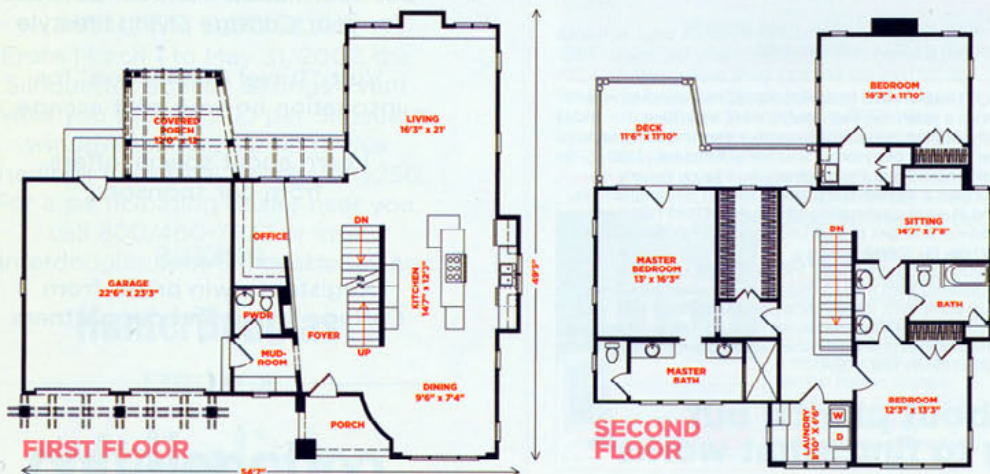
YOU CAN ORDER IT

NAME: Carlton Cottage **PLAN #:** COT-1394

GO TO: cottagelivinghomeplans.com **CALL:** 866/772-1616

MANY PLANS: See cottagelivinghomeplans.com for about 70 cottage plans and our “Home Plan Primer” to help you get started.

COSTS \$225, planning set; \$865, eight sets; \$1,195, reproducible sets; \$40, extra sets (available with the purchase of eight or more construction sets or reproducible sets). Postage, handling, and applicable taxes apply.



Every site is different, so the experts at Cottage Living recommend consulting a local architect or engineer before you begin construction. Plans do not include fully engineered framing plans, heating and plumbing plans, or material quantity lists. Square footage is approximate. All plans are copyrighted.

Bonus! For an inside peek, tour Rob’s real-life cottage at

COTTAGELIVING.COM